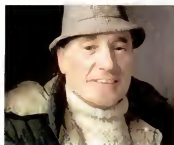


One more way Britain can be sure of Shell.

Wouldn't you protest
if Shell ran a pipeline through this
beautiful countryside?

They already have!



Tom Allen,
Shell Horticulturist:

"When Shell proposed
a pipeline from the
North East coast of

Anglesey to Stanlow refinery, seventy eight miles
away in industrial Cheshire, people were worried.

The line would run through part of the
Snowdonia National Park and have to pass under
rivers Conwy, Elwy, Clwyd and Dee.

What scars would remain?

It is five years since the line was laid,
and as I fly along the route today, even I can see
no sign of it.

On the ground, the course of the pipe can
be followed by a series of small unobtrusive
markers. Apart from these, there
is nothing to tell you that the top

of a pipeline runs one metre beneath your feet.

The sheer invisibility of the line
surprises visitors but not me. I was responsible for
re-instating the land and well know what
unprecedented lengths we went to. Every foot of
the way was photographed before digging started,
and the vegetation restored the way the record
showed it . . . even to the exact varieties of grass.

Sometimes, I agreed deviations in the
line to avoid disturbing rare trees. In addition,
a team of archaeologists preceded pipeline
contractors to make sure that the route would
avoid cromlechs, barrows, earthworks and other
historical sites.

We are proud of the result, and it shows the
way for other conservation projects."

You can be sure of Shell



